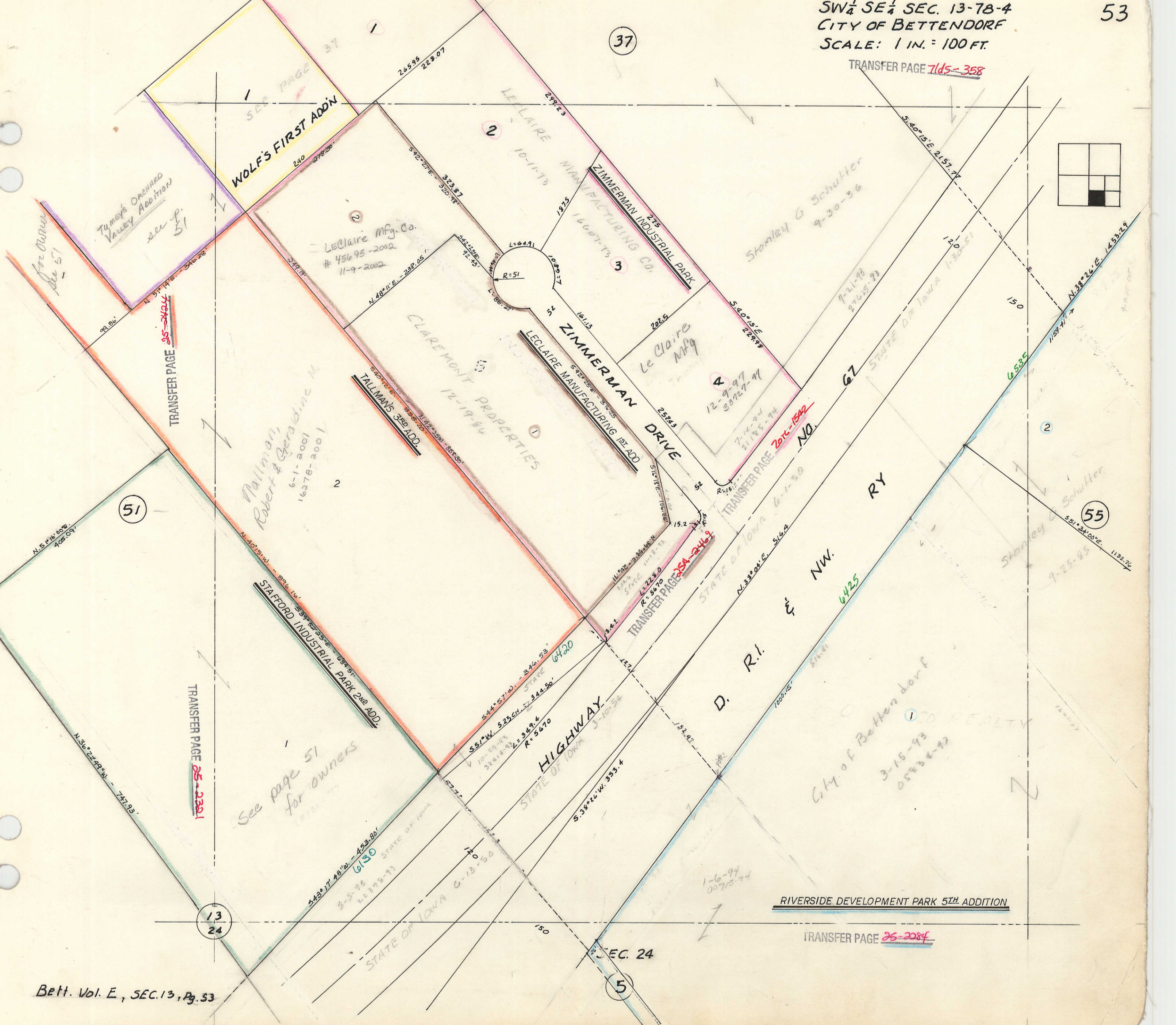


TRANSFER PAGE 7105-358



SEE PAGE 37

WOLF'S FIRST ADDN

LeClaire Mfg. Co.
45695-2002
11-9-2002

ZIMMERMAN INDUSTRIAL PARK
MIAMI MANUFACTURING CO.
16007-T3

Stanley G Schutter
9-30-36

CLAREMONT INDUSTRIAL PROPERTIES
12-19-86

ZIMMERMAN DRIVE
LECLAIRE MANUFACTURING 1ST ADD.

Le Claire Mfg
12-9-97
83727-97

TRANSFER PAGE 2014-1542

Mallman,
Robert & Geradine M.
6-1-2001
16278-2001

TALLMAN'S 3RD ADD.

STAFFORD INDUSTRIAL PARK 2ND ADD.

HIGHWAY

D. R. I. & NW.

RIVERSIDE DEVELOPMENT PARK 5TH ADDITION

TRANSFER PAGE 26-2284